

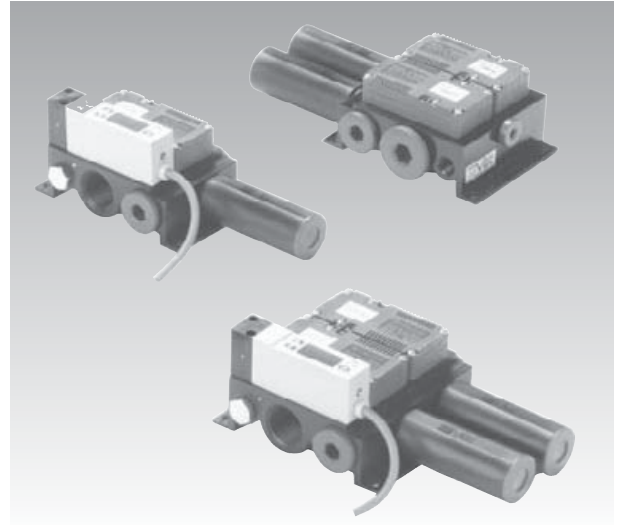
M – Duplex Pump

Max. vacuum level	: -85kpa (-637.5mmHg)
Max. flow rate	: 390NI/m (23.4m ³ /hr)
Supply air pressure	: 4-6 bar Max. 7 bar
Supply air type	: Dry compressed air
Working temperature	: -20°C to +80°C
Noise level	: 57 - 65dBA

Main advantages

M-Duplex pump is similar to the block type in that it uses the components of the mini type multi stage vacuum pump. The pumps are mounted onto a dual station manifold. This manifold enables compact and simple installation.

The manifold can accommodate two VTM30 pumps thus producing a VTM60, which gives high flow rates in a compact format. A vacuum switch can be ordered with the unit which piggy backs one of the pumps again for compact and easy installation. There is an option for mounting the exhausts one either side or both on one end of the manifold. There is also the option of connecting vacuum and air supply connections on either side of the manifold block, vacuum connections are 1/2" BSPX2.



Order No.

VTM20KD - S2 - V



① Model – Capacity equivalent to electricity motor pump size

•	VTM20KD – 0.2KW
	VTM30KD – 0.3KW
	VTM40KD – 0.4KW
	VTM50KD – 0.5KW
	VTM60KD – 0.6KW

② Vacuum Switch

	S1 – Mechanical vacuum switch
•	S2(P) – Digital display output 2points, No analog supply
	S3(P) – Digital display output 2points, analog supply

※ Remark : S₂(P) Output type : PNP open collector

③ Sealing

	No mark – Standard (NBR)
•	V – Viton®
	E – EPDM

Characteristics

Model	max. vacuum -kPa(-mmHg)	Max. vacuum flow (NI/m)	air consumption (NI/m)	noise level (dBA)	weight (g)	min hose inner Ø (within 2m)		
						air supply	vacuum	exhaust
VTM20KD	85 (637.5)	149	60-84	57 - 58	179	>4	>10	>12
VTM30KD		220	90-126	57 - 58	190	>6	>10	>15
VTM40KD		292	120-168	57 - 60	321	>6	>12	>15
VTM50KD		341	150-216	58 - 63	329	>8	>12	>18
VTM60KD		390	180-252	60 - 65	338	>8	>15	>18

Induce air in liters per minute (NI/m)

Model \ -mmHg -kPa	0	75	150	225	300	375	450	525	600
	0	10	20	30	40	50	60	70	80
VTM20KD	149	99	62	54	40	32	22	10,5	2,7
VTM30KD	220	147	92	73	60	47	32	16	4,1
VTM40KD	292	200	110	93	80	63	43	21	5,4
VTM50KD	341	228	135	115	100	79	60	24	6,6
VTM60KD	390	256	259	137	119	94	64	32	8,5

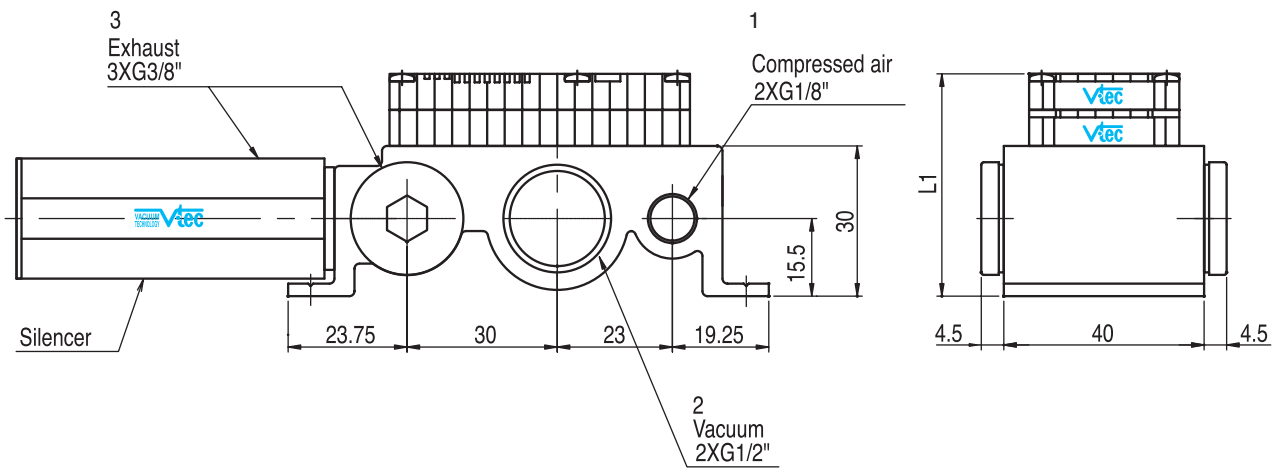
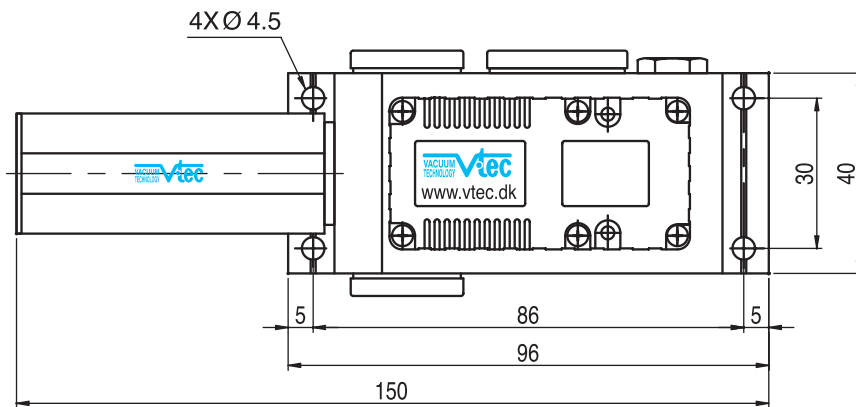
Time in seconds to evacuate to vacuum level (sec/l)

Model \ -mmHg -kPa	75	150	225	300	375	450	525	600
	10	20	30	40	50	60	70	80
VTM20KD	0,054	0,139	0,25	0,394	0,589	0,86	1,317	2,579
VTM30KD	0,041	0,104	0,186	0,295	0,441	0,647	0,898	1,935
VTM40KD	0,027	0,069	0,125	0,197	0,294	0,431	0,658	1,289
VTM50KD	0,023	0,058	0,104	0,164	0,245	0,359	0,549	1,074
VTM60KD	0,018	0,046	0,083	0,131	0,196	0,286	0,439	0,859

Dimensional Information

Standard

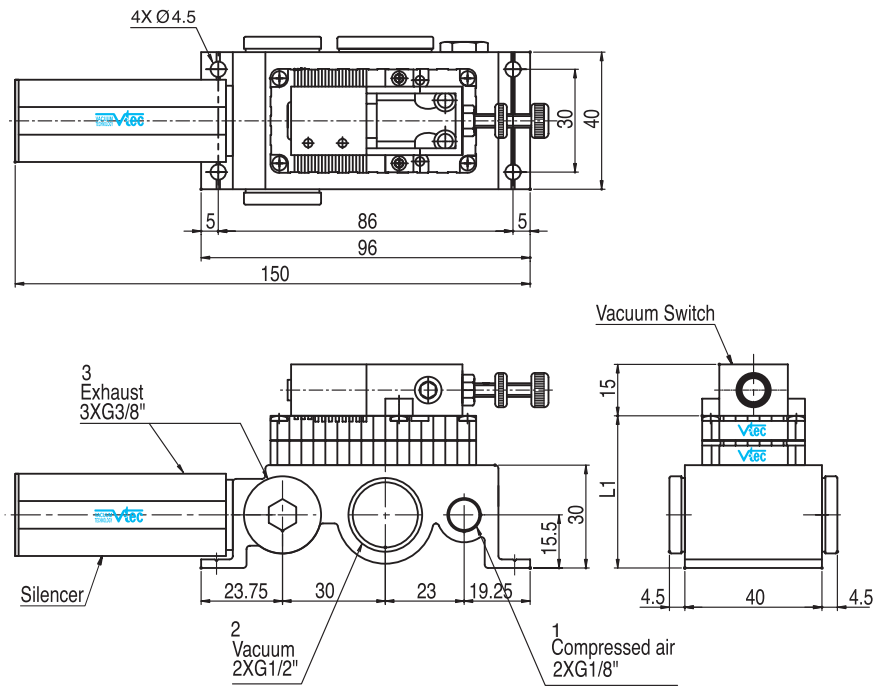
VTM 20KD 30



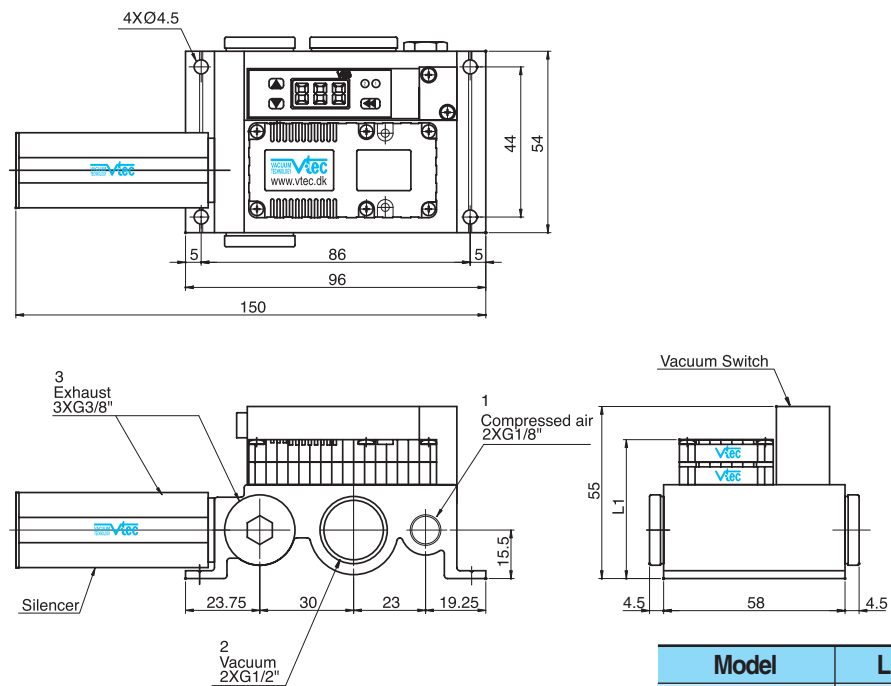
Model	L1 (mm)
VTM20KD	44.4
VTM30KD	51.6

Dimensional Information

with switch S1



with switch S2, S3



Model	L1 (mm)
VTM20KD	44.4
VTM30KD	51.6

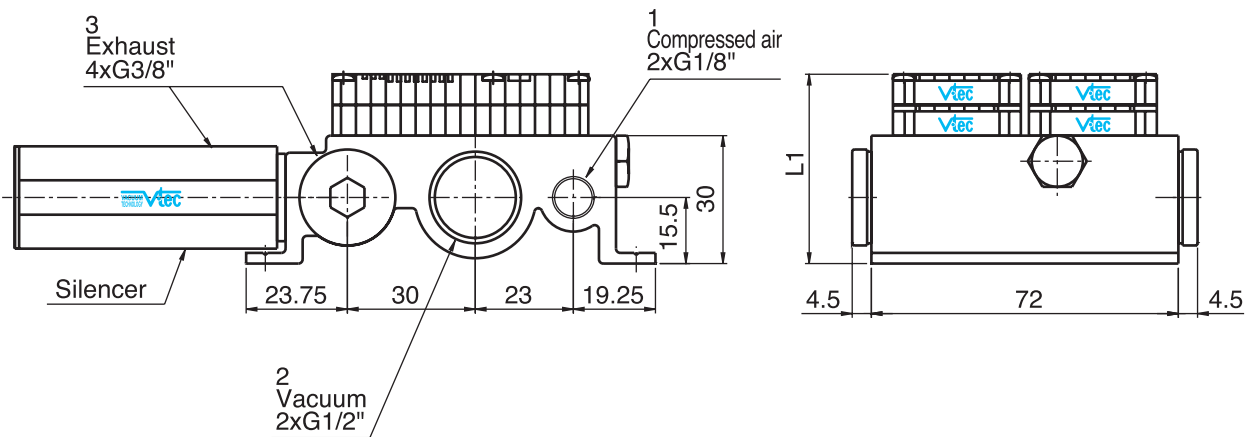
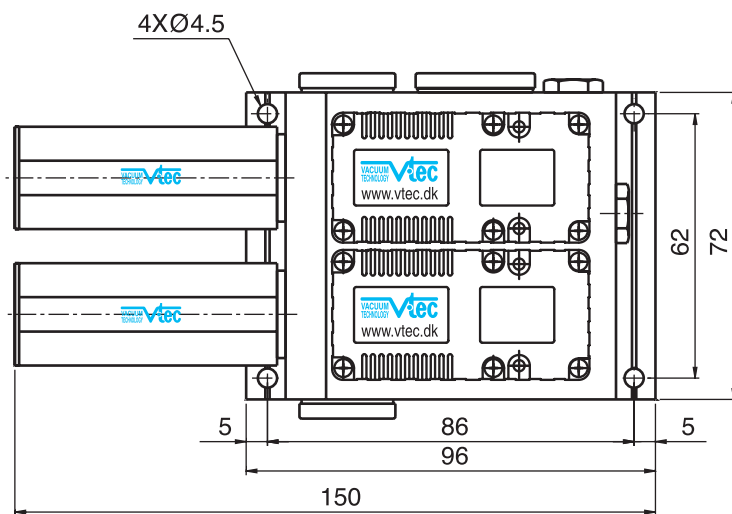
Dimensional Information

Standard

VTM 40KD

50

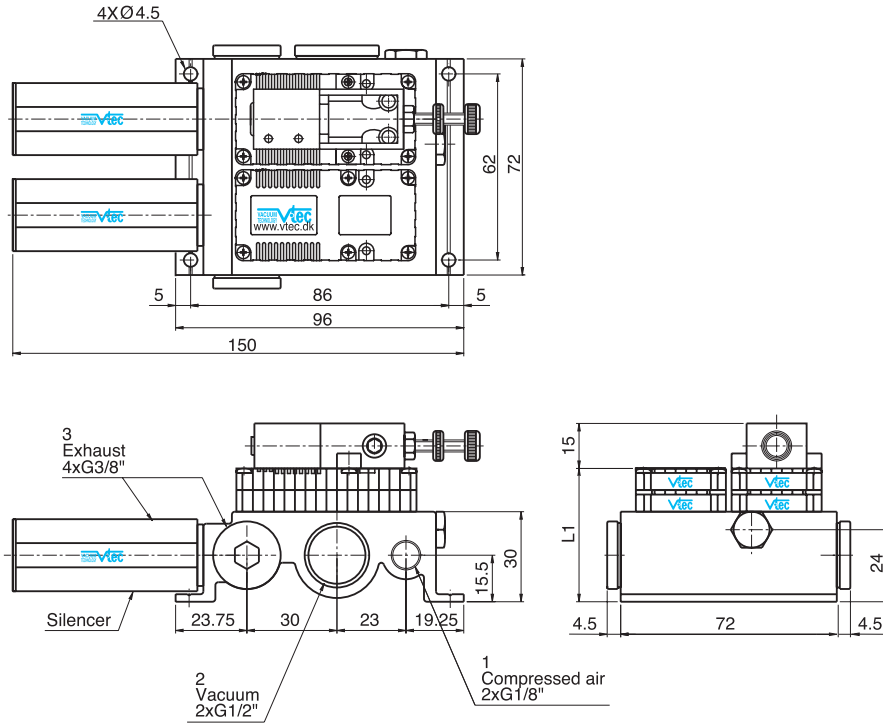
60



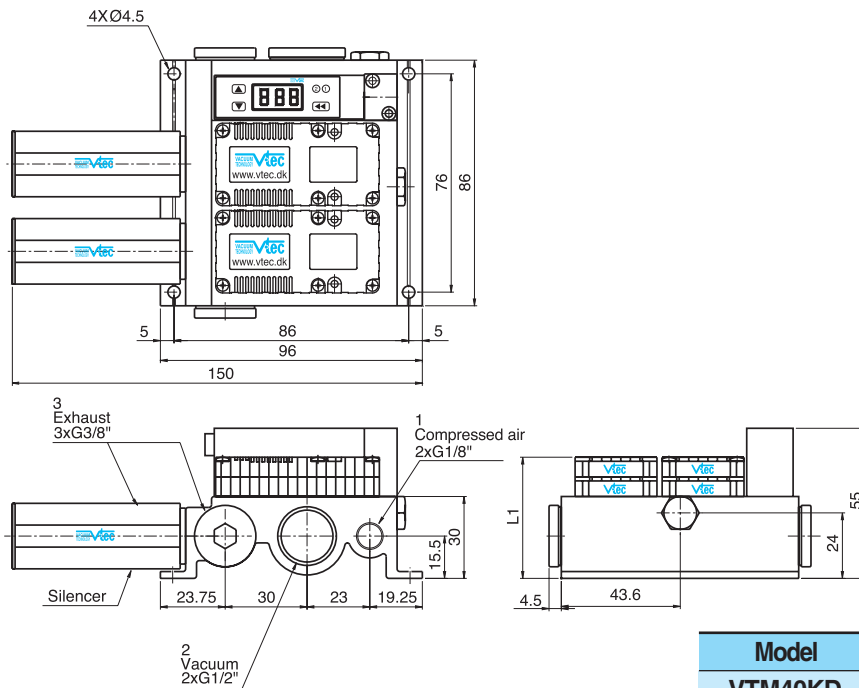
Model	L1 (mm)
VTM40KD	44.4
VTM50KD	51.6
VTM60KD	51.6

Dimensional Information

with switch S1



with switch S2, S3



Model	L1 (mm)
VTM40KD	44.4
VTM50KD	51.6
VTM60KD	51.6